

BAT HOUSES & SERVICES

GREAT
For Residential
& Commercial
Properties, Golf
Courses, Parks,
Farms, & Many
Other Locations

BAT HOUSES

You can provide a home for hundreds or thousands of bats by putting up a Lubee made bat house on your residential or commercial property. A bat house offers the perfect place for our flying friends to live. They will return the favor by helping to control insects in your area. Our houses have a 90% success rate. Average time to occupancy is 3-6 months.

WE HAVE 4 SIZES TO CHOOSE FROM:

3 chamber: 100-200 bats 2x2: 1500-2000 bats
4 chamber: 300-400 bats 2x4: 3500-5000 bats

SITE RECOMMENDATIONS

Lubee staff are available to survey your property and recommend the ideal area to locate your bat house. The single best thing you can do to attract bats is to put it in the perfect location. In fact, this is the only way to ensure occupancy of your bat house. Let a Lubee staff member inspect your property for ideal placement.

INSTALLATION

Lubee staff members have installed numerous bat houses throughout the southeast and are happy to do the work for you!



4 chamber for
Haile Plantation



3 chamber at
Bronson
Elementary



2x2 Bat House

2x4 Bat House

2x4 Bat House



Mexican Free-
tailed Bats in a
Lubee bat house



Lubee
BAT CONSERVANCY

*Saving Bats.
Conserving Ecosystems.
Inspiring Stewardship.*

ACOUSTIC SURVEYS & CALL ANALYSIS

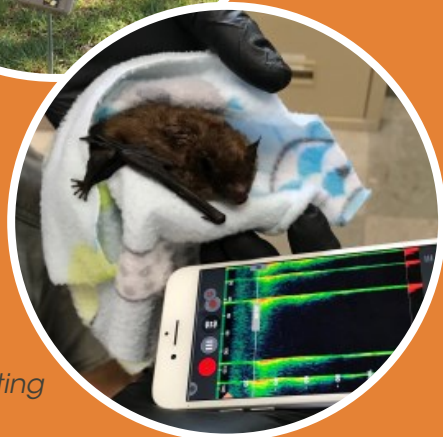
Do you have bats on your property that will utilize houses? Lubee staff members are trained in acoustic monitoring and call analysis. Let our knowledgeable staff set up monitoring equipment to determine what species are common in your area. Lubee staff have analyzed thousands of calls and are eager to continue this amazing glimpse into the secret lives of bats.



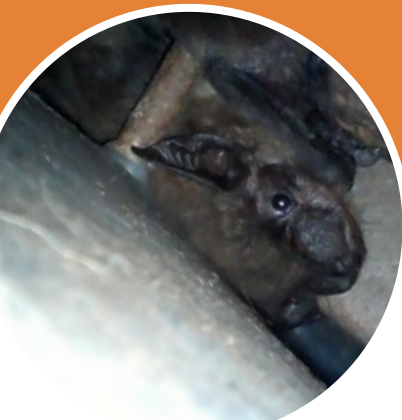
Mexican Free-tailed Bat echolocation calls



Acoustic monitoring equipment



Native Big Brown Bat echolocating



Evening Bat under fascia

CLIENTS

Our clients include residential and commercial properties, cement plants, parks, golf courses and farms.

Please note that we do not handle permits. The client shall deal with all matters related to required permitting and Lubee will provide any pertinent information.

EXCLUSION

Lubee staff provides advice on humane bat exclusion for residential and commercial properties. Our trained biologists can recommend professional companies that provide exceptional service and the utmost care to ensure all bats are removed safely and humanely. Please note that exclusions CANNOT legally occur April 15 - Aug 15 in Florida due to maternity season.



Mexican Free-tailed bat in building.



Bats living in brick column

WHY BATS?

Bats are the primary predator of night-flying insects, including mosquitoes and agricultural pests. One bat can eat hundreds of insects a night! Putting a bat house on your property is a win/win - you provide the home, they'll take care of the bugs.



Twin Variable Flying Fox



Native Evening & Southeastern Bats



Malayan Flying Fox mom and pup



Malayan Flying Fox LOVE watermelon

OUR MISSION

Lubee Bat Conservancy is a non-profit organization dedicated to saving bats and their habitats through research, conservation, and education, with a focus on children and community engagement.

**BATS ARE
NATURE'S INSECT
CONTROL. LESS
PESTICIDES.**



LUBEE BAT CONSERVANCY

1309 NW 192nd Ave Gainesville, FL 32609
info@lubee.org · www.lubee.org · 352-485-1250